



## In This Issue:

**BERARD**  
SINCE  
1945

The Mega Transport Experts

- > Load Out! | The LPG Vessel Project
- > The Shipyard! | The Caisson Transport
- > Showtime! | See Us @ Breakbulk Americas
- > Team Member Spotlight | Trey Chapman

# Load Out! The LPG Vessel Project



## Job Specs

**Weight:** 371 Tons

## Dimensions:

203'L x 9'-7" w x 17'-3" h

## Equipment Used:

24 axle lines of SPMTs, barge ramps, steel plate and winch trucks

The Berard team recently loaded out (2) LPG vessels for a client in South Louisiana. The team situated 24 axle lines of SPMTs in a double file configuration for maximum stability of the 371 ton vessels. Soft ground conditions called for the use of steel plate to help distribute the load so the vessels could be transported through the client's yard to the bulkhead for loading onto a deck barge. The vessels were loaded one at a time and transported via barge to a crane barge and lifted from the SPMTs. Once clear, the barge was removed from under the suspended load and another barge that will permanently house the vessels moved under so that the vessels could be lowered into position in the barge. It was another example of Berard's dedication to a safe and successful project!





# The Shipyard The Caisson Transport



## Job Specs

### Weight:

224,000 lbs

241,000 lbs

### Dimensions:

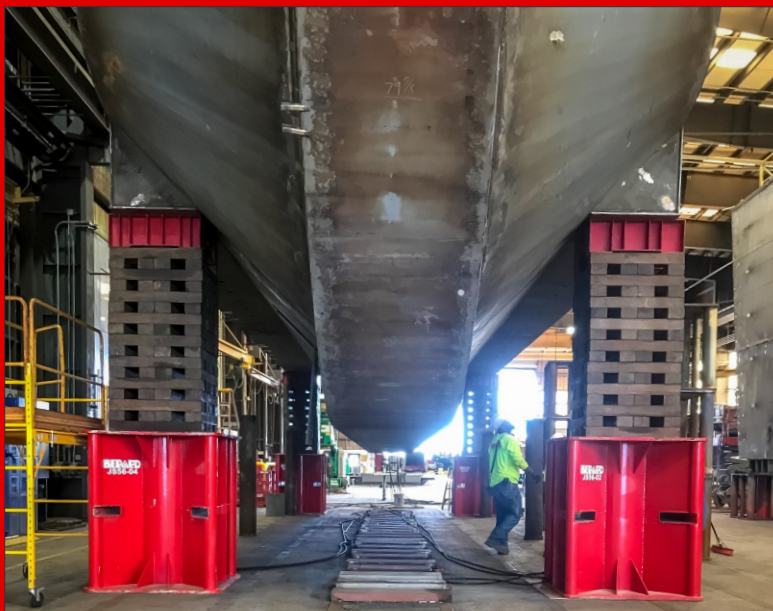
37'L x 16'W x 29'H

81'L x 16'W x 27'H

### Equipment Used:

12 axle lines of SPMTs, unified jacking system, stands and cribbing

The Berard team jacked and transported (2) Caisson sections for a shipyard client in the North East U.S. The lower caisson, was required to be jacked utilizing our climbing jack system due to it being constructed flat to the floor. Due to limited door height, the team was not able to add transverse beams but rather designed and fabricated new support stands that were at the same height of the SPMT deck and added areas for us to support the caisson. After loading, Berard transported the caissons out of the building, down a public road, across a culvert and in to a travelift for lifting from SPMTs. The team then transported the upper section of the caisson from stands to the travelift for lifting off from SPMTs.



# Showtime! Berard @ Breakbulk Americas



The Berard team will be exhibiting at BreakBulk Americas, October 2nd - 4th 2018 located in the George Brown Convention Center in Houston, Texas. Our sales and marketing team will be on hand to introduce you to our great company and showcase all of our great services.

Come by our booth #1404 and say hello!

**SEE US!**  
**@ BOOTH**  
**1404**



# Trey Chapman

## Heavy Haul Leaderman



Trey Chapman joined the Berard team in August of 2015 and serves as our heavy haul leaderman. His specialty is keeping our over the road heavy transport projects moving along smoothly and he does a great job at it. He really loves his job.

Trey says "Everyday is something new. New challenges, new scenery, It's definitely an adventure! From moving huge cargo over the road to moving massive ships, vessels, and everything else, it's awesome to be part of it!"

When off of work he enjoys being home with his fiancé Lacy and their son Liam. He also likes cooking and spending time with his family. Trey says "We're always outside getting into something. Gotta enjoy the little things!"



# Happy Birthday!

**Happy Birthday to These Dedicated Team Members!**

Randy Berard  
Keith Daigle  
Darryl Doucet

Tina Lasseigne  
Renee Legendre  
Kevin Bouton

Jamie Houghton